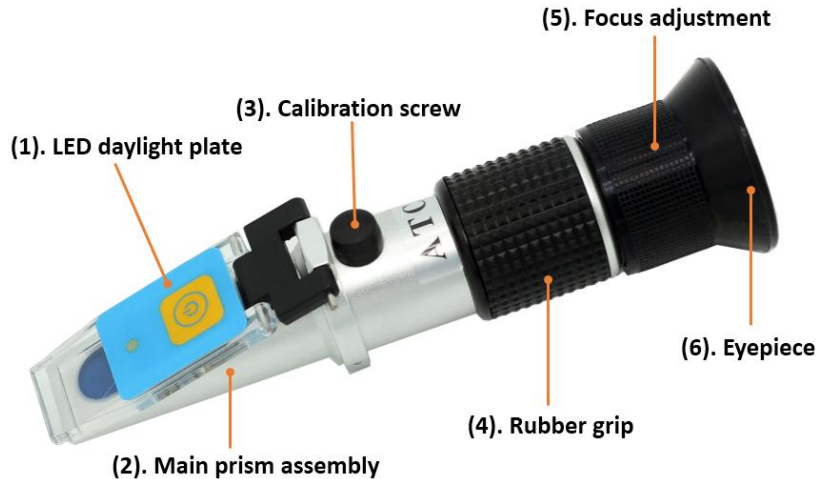


Operation Manual

For LED Hand Held Refractometer



Feature

1. Easy to focus and calibrate.
2. Cushioned with soft & comfortable non-slip rubber.
3. With ATC function (ATC Compensation Range: 10°C~30°C (50°F~86°F)).
4. Durable and built to last long.
5. With build-in bright LED light. Allows you make test in dark or twilight environment.
6. LED refractometer support replace battery. The battery can be replaced after the battery is exhausted.
7. Convenient to use. It's only need to press the LED cover plate button one time, the LED light will turn on and keep bright

Calibration Procedure

Note: Honey refractometer calibrate need special calibration oil and stone, it's not a standard configuration on packing. **All refractometers are calibrated before send out, so usually no need to calibrate it.**

1. Firstly, the dioptric oil can attack the daylight plate(all plastic and rubber), please keep it away from the daylight. With repeated contact, the dioptric oil can cause cracking and fogging of the daylight plate. When you do the calibration, the calibration stone (reference block) must be used and it will act as daylight plate.

2. Drop one drop of dioptric oil on the long-sided surface of calibration stone (reference block). Open the daylight plate, stick the calibration stone(oily side down) on the surface of the prism, and press it lightly with your hand, so that it can not slide down. Rotate and adjust the calibration screw to make the white and blue boundary coincide with the reference reading: water 19.6%

3. You're done! The unit is now ready to accurately test whatever you need!



Usage Instructions

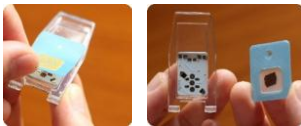
1. Open daylight plate, clean the instrument using a soft, damp cloth.
2. Place 2-3 drops of sample water on the main prism.
3. Hold daylight plate in the direction of a light source.
4. Turn the focus adjustment.
5. Take the reading where the boundary line of blue and white cross the graduated scale.

Package List

1xATC refractometer 1xMini-screwdriver 1xPipettes
1xProtective carrying case 1xManual 1xClean cloth 1xBattery

LED Cover Plate Replace Battery Step

Step 1. Take off the button sticker with care.



Step 2. Take out the chip by using the pin



Step 3. Remove the old battery



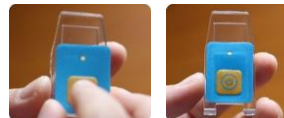
Step 4. Install the new battery



Step 5. Put back the chip to the plate



Step 6. Re-paste the sticker. Done



Warning&Maintenance

1. Accurate measurement depends on careful calibration. The prism and sample must be at the same temperature for accurate results.
2. Do not expose the instrument to damp working conditions, and do not immerse the instrument in water. Do not measure abrasive or corrosive chemicals with this instrument.
3. Clean the instrument between each measurement using a soft, damp cloth. Failure to clean the prism on a regular basis will lead to inaccurate results and damage to the prism's coating.
4. This is an optical instrument. It requires careful handling and storage. Failure to do so can result in damage to the optical components and its basic structure.